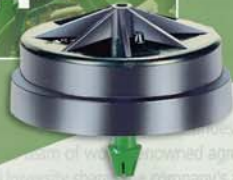


On-Line Pressure-Compensated Drippers

Engineered to answer growers' needs



PC Dripper



PCJ Dripper



CLOG RESISTANCE
UNIFORM IRRIGATION PRECISION
ANTI-DRAINAGE RELIABILITY



Netafim drippers give growers the irrigation control they need

Acclaimed worldwide for raising the quality and quantity of crops, Netafim drip irrigation enables limited water resources to be used more efficiently. The company's advanced technology and vast field experience have played a crucial role in the development of online self pressure-compensating, continuously self-cleaning drippers. Precision-tooled and manufactured from PP and high-quality synthetic elastomers, Netafim's On-Line Pressure Compensated (PC & PCJ) drippers ensure high resistance to regular chemicals and fertilizers. With a superior track record in every application, these high-performance online drippers are recognized as today's industry leaders.



A unique design feature

Every Netafim On-Line PC and PCJ dripper is fitted with a patented regulating mechanism that uses the differential pressures concept to ensure that irrigation fully answers crop needs.

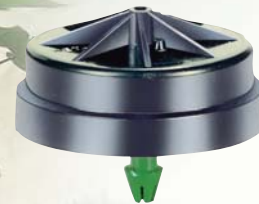
Highest distribution uniformity

Netafim's exclusive diaphragm and labyrinth design delivers a consistent flow rate and precise, uniform irrigation - regardless of changes in water pressure and/or topography.

Continuous self-cleaning

Operating from the beginning to the end of every cycle, the self-cleaning process guarantees reliable, clog-free operation, year after year.

On-Line PC drippers design
Netafim's drippers are backed by forty years of accurate reliable performance over



On-Line PC drippers

Noted for their long and successful track record irrigating orchards, citrus and olive groves around the world. Exceptionally wide water passages ensure long-term trouble-free performance.

Flow rates:

PC: 2.0, 4.0, 8.5, 25 l/h

PC low CNL: 2.0, 4.0, 8.5 l/h

PC high CNL: 3.0, 6.0, 12 l/h

◦ Color-coded flow rates enable quick, easy recognition.



Regulating anti-drainage feature

A Compensated Non-Leak (CNL) mechanism closes the water passage when pressure in the pipe drops (after valves shut at the end of an irrigation cycle) and the desired pressure is achieved. This ensures that the pipe is filled with water, ready for the next cycle. It also minimizes water loss before the next round of irrigation.

Designed for specific tasks
a broad range of applications and in diverse conditions around the globe



On-Line PCJ drippers

Compact pressure compensated drippers successfully irrigate greenhouses and nurseries in a diversity of global climates. Wide water passages guarantee long-term trouble-free performance.

Flow rates:

PCJ: 1.2, 2.0, 3.0, 4.0, 8.0, 12 l/h

PCJ low CNL: 1.2, 2.0, 3.0, 4.0, 8.0, 12 l/h

PCJ high CNL: 1.2, 2.0, 3.0, 4.0 l/h

◦ Color-coded flow rates enable quick, easy recognition.

Spider assembly

Netafim offers growers a range of micro tubes, manifolds and/or end-line products which, when connected to drippers can be used for the following applications:

- To direct water flow to a specific location
- To irrigate a variety of points

All options ensure effective, focused irrigation that utilizes relatively small quantities of water and achieves impressive results.

◦ Refer to the Netafim Accessory Catalog for more details about Netafim's assembly products.

Choose the dripper model for your specific irrigation goals:

1. Flow-regulated Drippers

Designed to ensure uniform irrigation along the distribution pipe. The result: precise, efficient and uniform flow distribution over the entire growing area.

2. Low CNL Drippers and High CNL Drippers

Netafim enables growers to match the dripper's closing pressure to suit their topography, crops and operating system.

The CNL (Compensated Non-Leak) anti-drain device closes the water outlet at the end of every irrigation cycle leaving distribution pipes filled with water, ready for the next irrigation cycle.

Low CNL drippers require less pressure to enter the regulating range and self-close at pressures lower than 0.12 to 0.15 bars*.

High CNL drippers require more pressure and prevent dripperlines from emptying at pressures lower than 0.2 to 0.3 bars*.

By preventing dripperlines from being emptied and refilled, irrigation efficiency is improved. CNL drippers are ideal for pulse irrigation.

Working pressure should be defined according to dripper features.

* According to dripper model (PC/PCJ).



For more details please refer to:
www.PCdrippers.com

